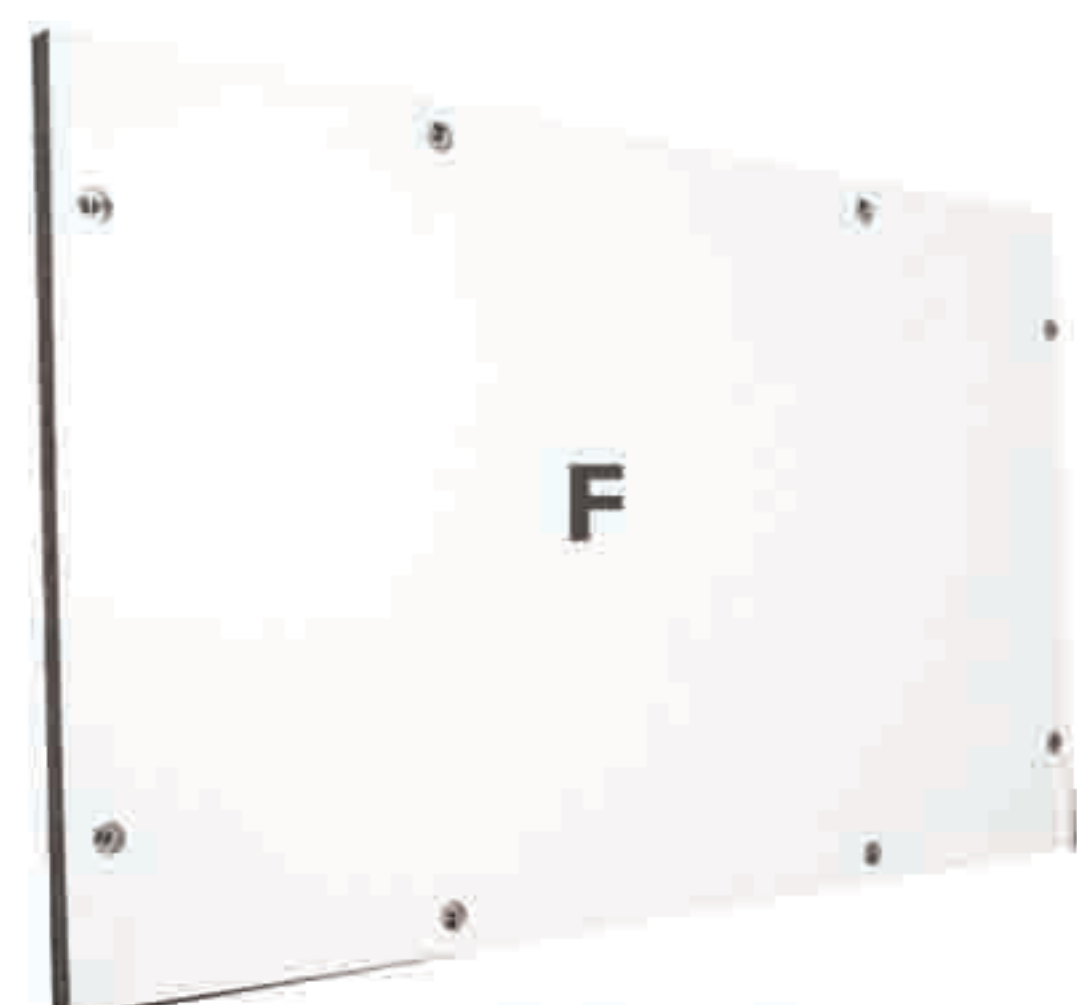




TOP (X1)



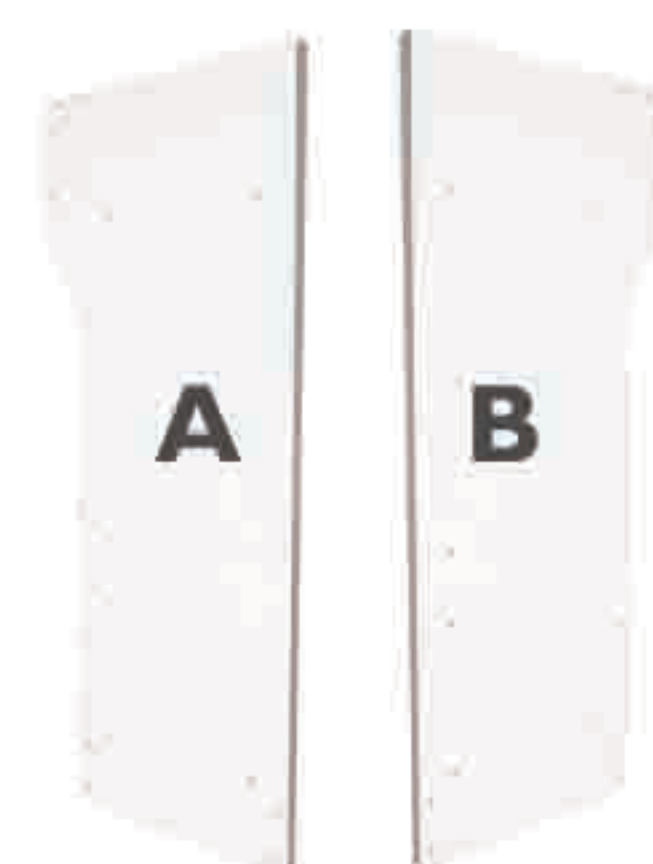
BOTTOM (X1)



FRONT (X1)



CENTER (X1)



LEFT SIDE (X1) / RIGHT SIDE (X1)



LEDGE TOP PANEL (X1)



LEDGE TOP FRONT (X1)



TOEKICK (X2)



DRAWER LEFT (X1) / DRAWER RIGHT (X1)



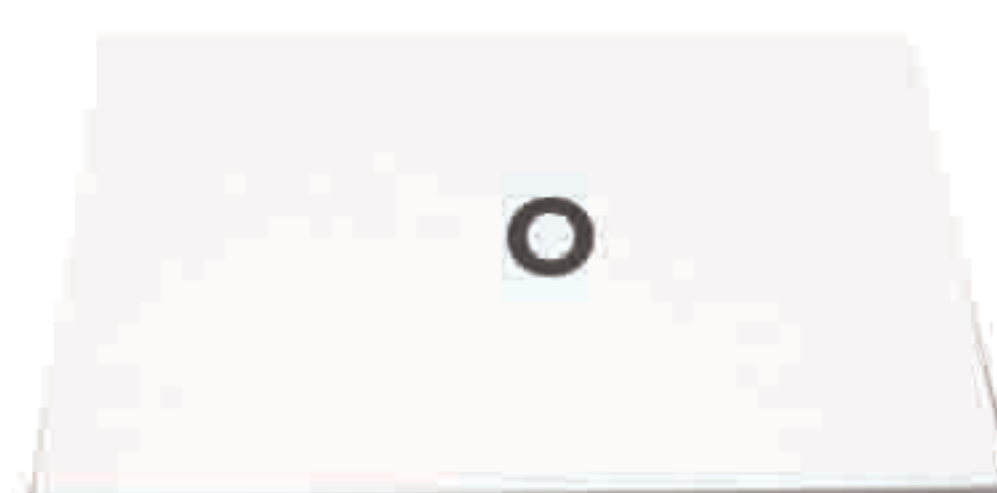
DRAWER FRONT (X1)



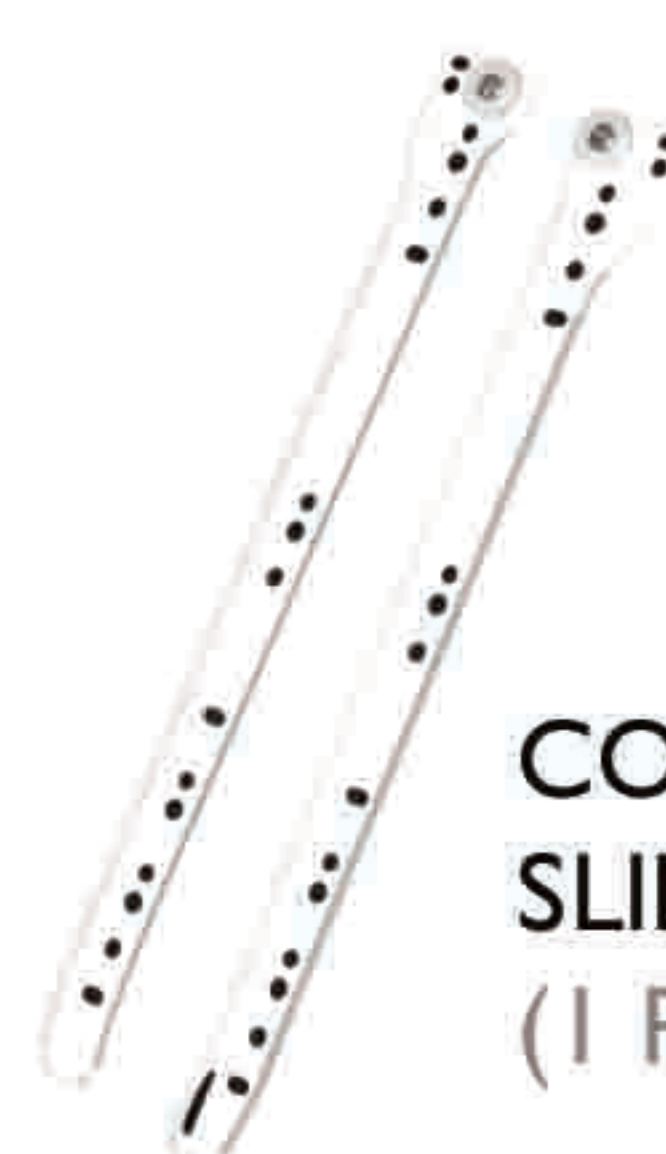
DRAWER BACK (X1)



DRAWER BOTTOM (X1)



SHELF (X2)



COUNTER SLIDERS (1 PAIR)



DRAWER SLIDERS (1 PAIR)

## LEDGETOP COUNTER ASSEMBLY INSTRUCTIONS



DAWSON JONES  
STORE FIXTURES



### TOOLS NEEDED



2960 Amwiler Rd.  
Atlanta, Ga 30360  
dawsonjones.com  
(800) 418-1954  
(770) 458-7234

NOTE: It is recommended that two persons assemble this unit.

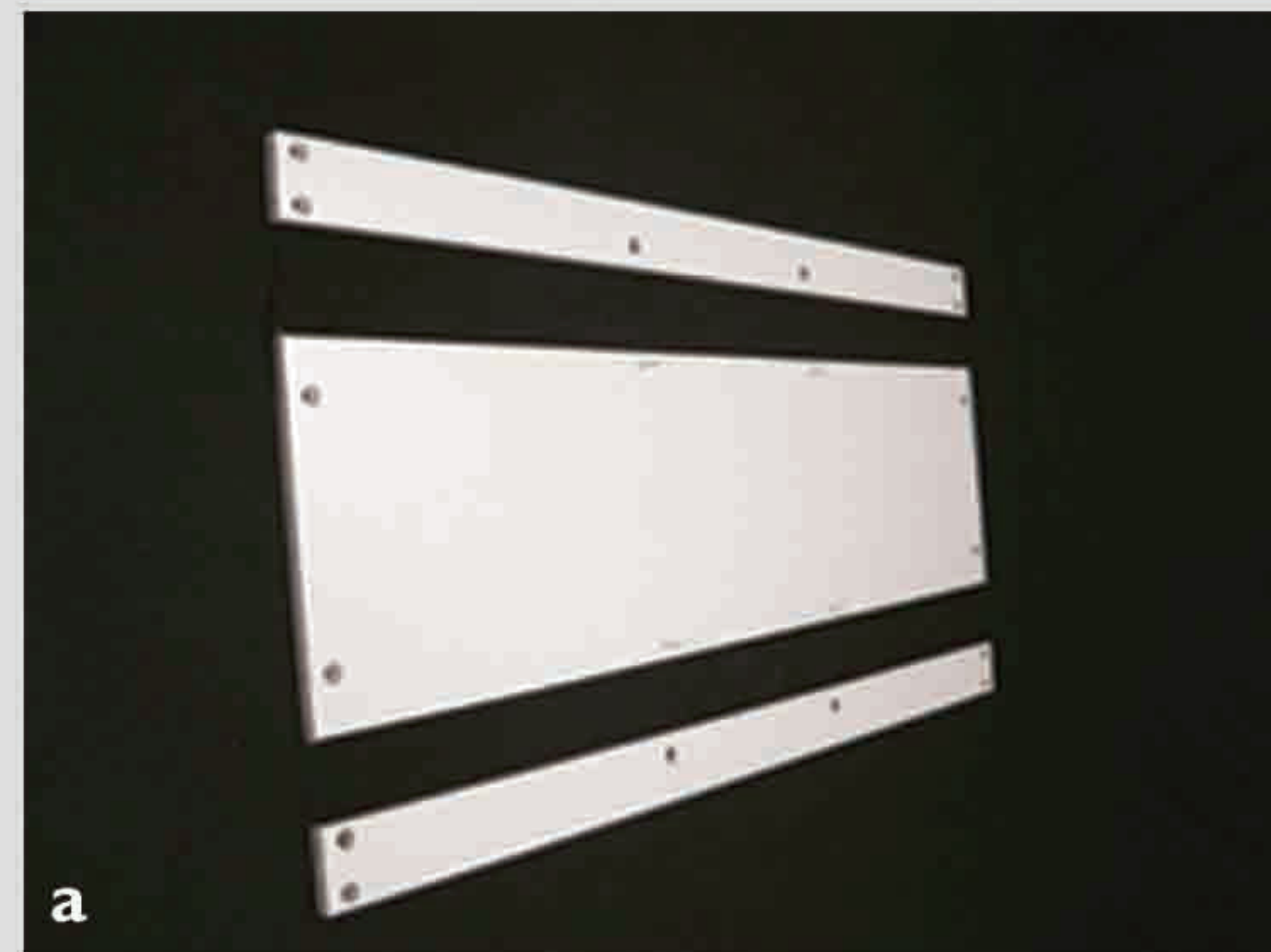


1.

## BASE ASSEMBLE

BOTTOM PANEL (x1)  
TOE KICK PANEL (x2)  
#10 CAM LOCK (x16)  
BOLT (x4)  
GLIDE (x4)

1. Connect toe kick panel to bottom panel using bolts.
2. Insert and tighten #10 cam locks.
3. Attach glides on the toe kick.

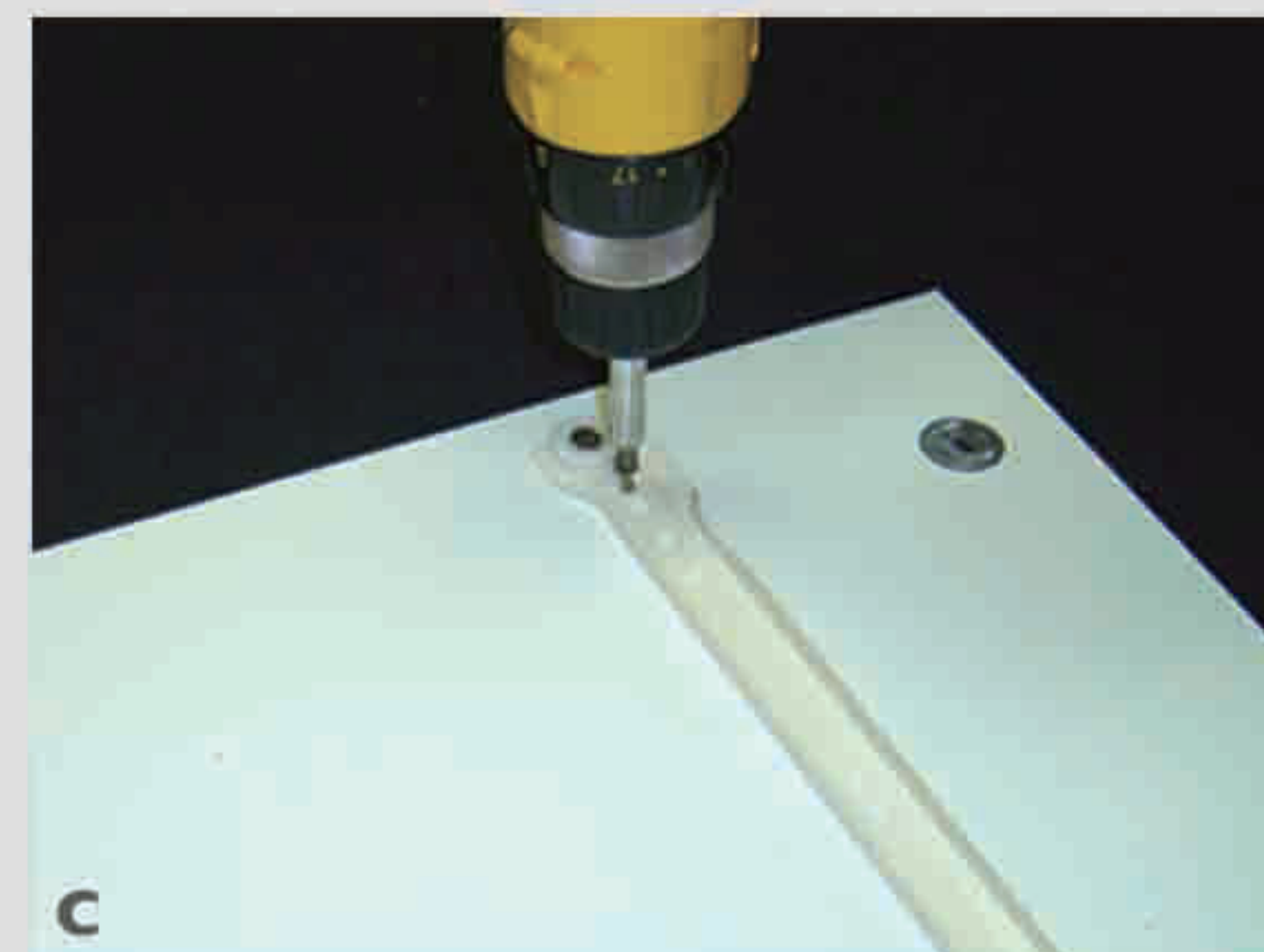
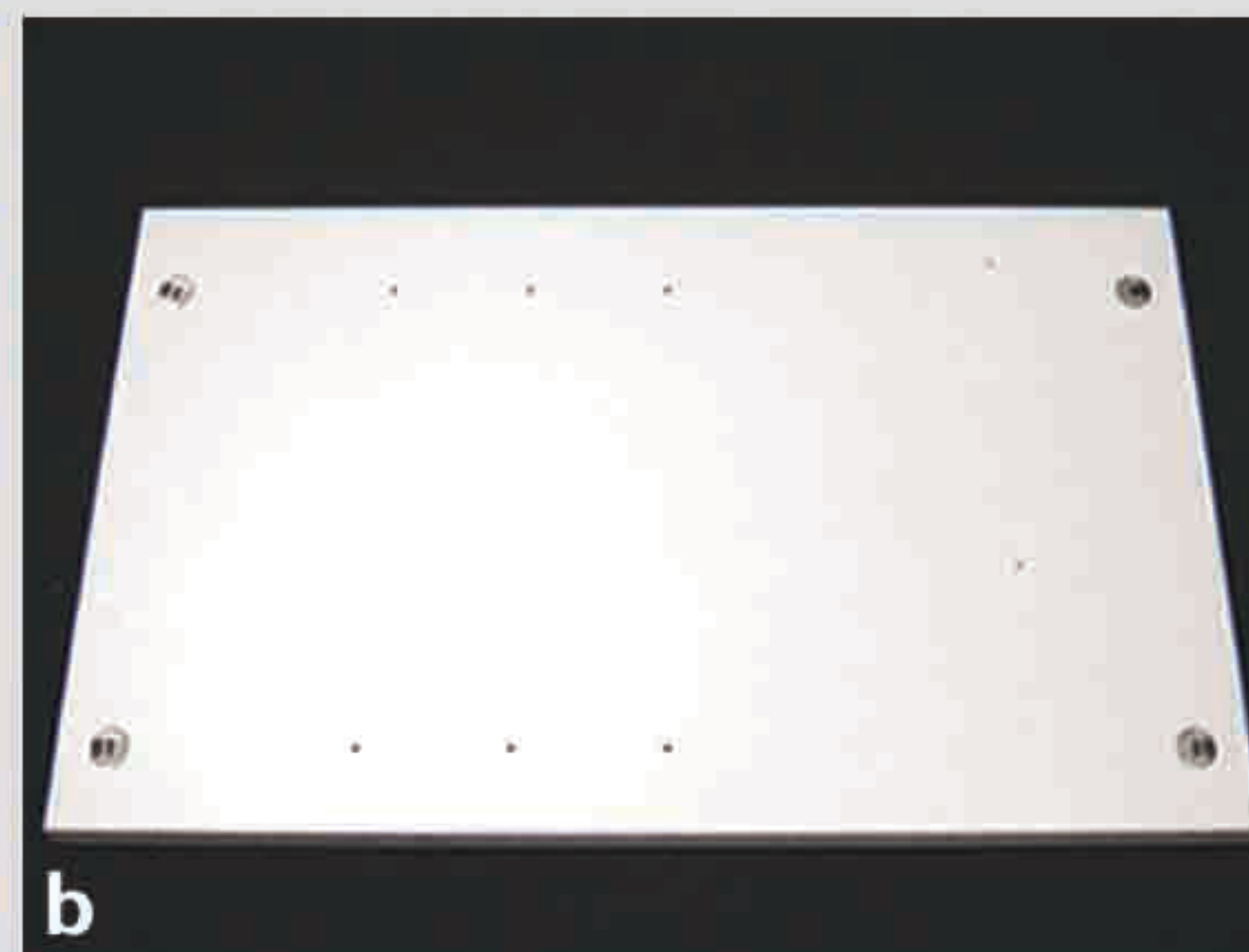


2.

## CENTER PANEL & FRONT PANEL ASSEMBLE

CENTER PANEL (x1) BOLT (x4)  
FRONT PANEL (x1) LEFT COUNTER SLIDER (x1)  
#10 CAM LOCK (x12) #6x12 PHILLIPS SCREWS (x2)

1. Attach slider to center panel; tighten.
2. Attach center panel to bottom base; tighten.
3. Connect the front and bottom panels; tighten.





3.

### TOP PANEL ASSEMBLE

TOP PANEL (x1)  
#10 CAM LOCK (x4)  
BOLT (x4)

1. Attach top panel using bolts.
2. Tighten #10 cam locks.

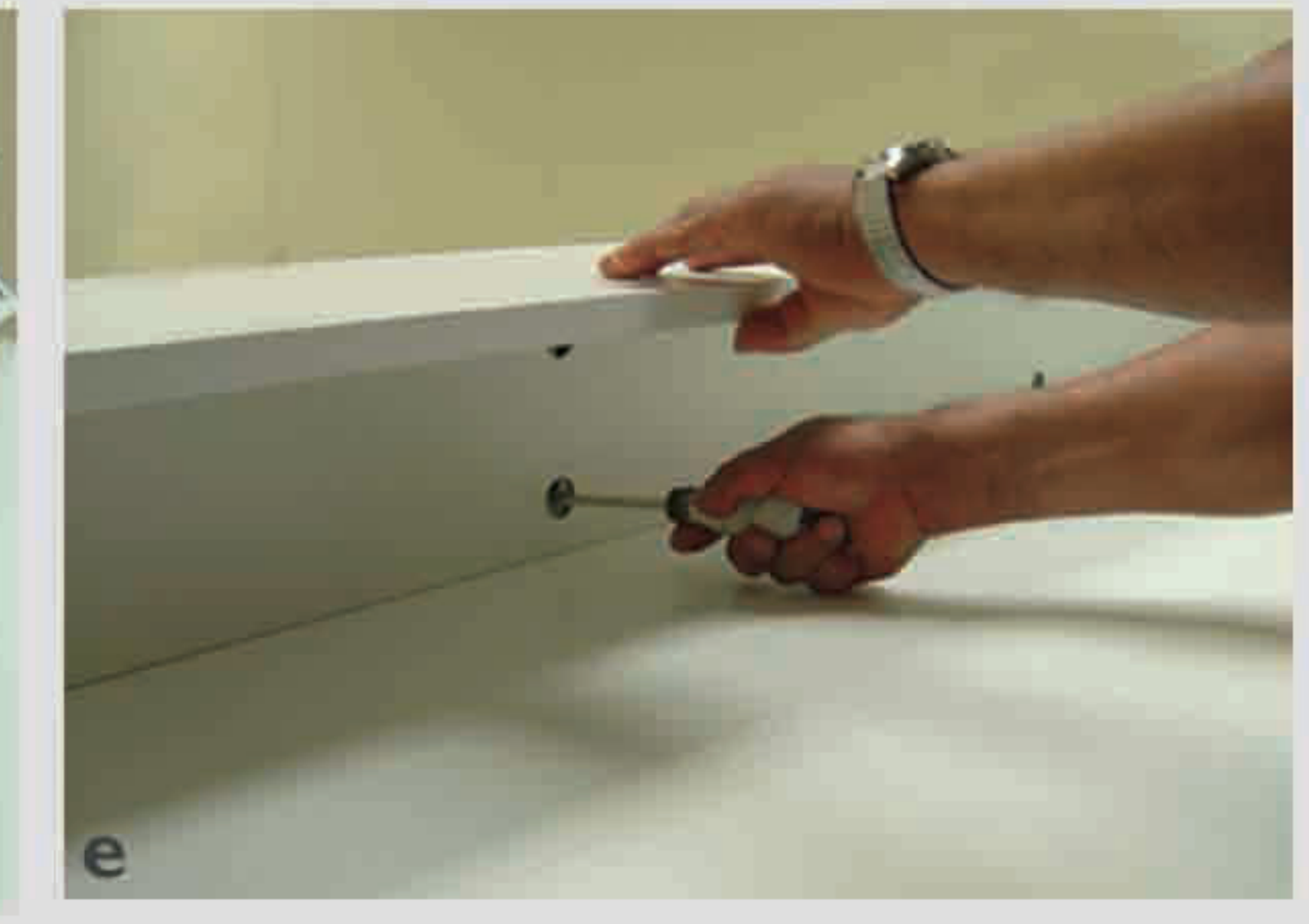
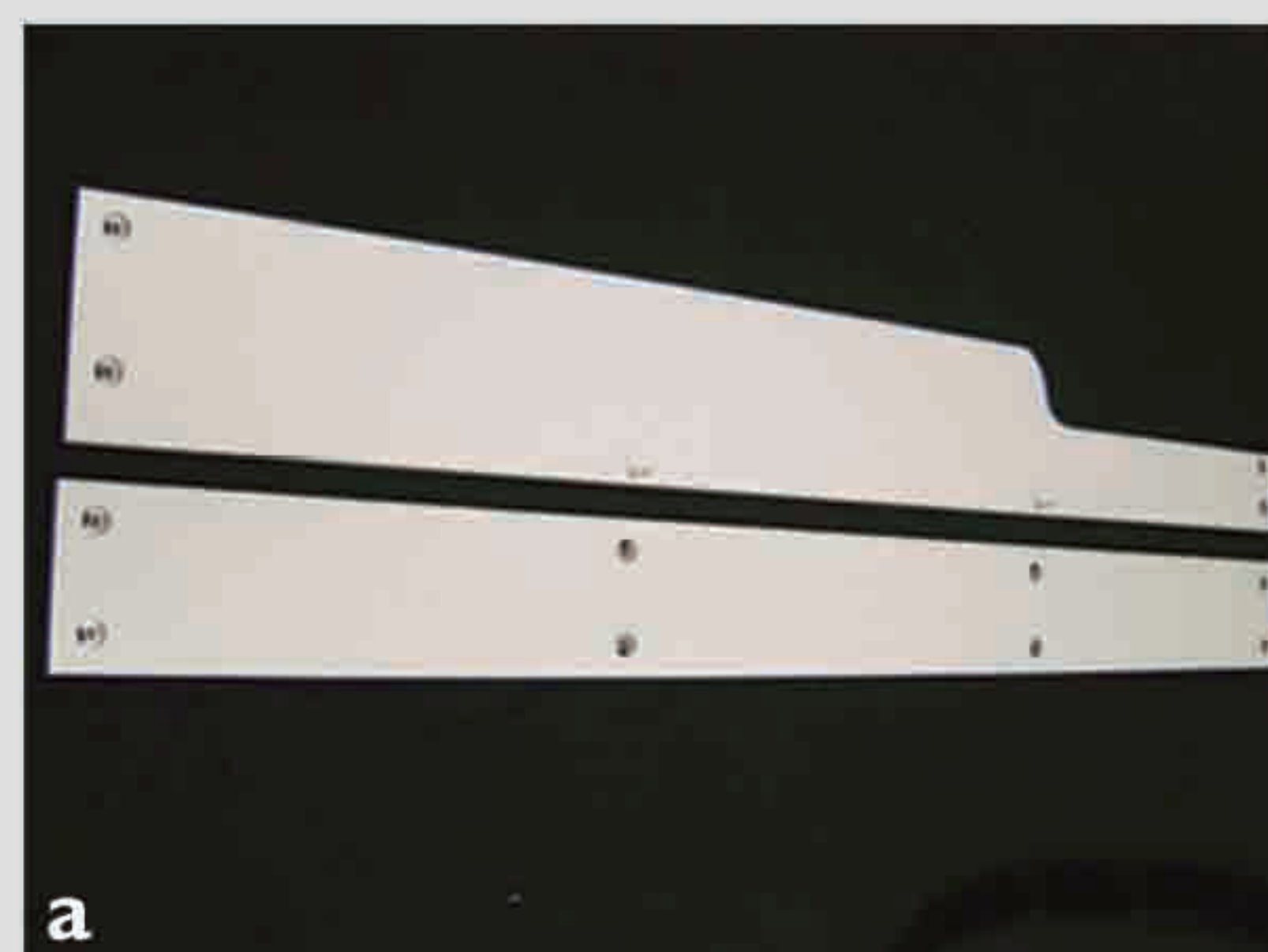


4.

### LEDGE TOP ASSEMBLE

LEDGE TOP PANEL (x1)  
LEDGE TOP FRONT PANEL (x1)  
#10 CAM LOCK (x12)  
BOLT (x2)

1. Connect ledge top front panel and ledge top panel ; tighten.
2. Attach ledge top piece to counter; tighten.



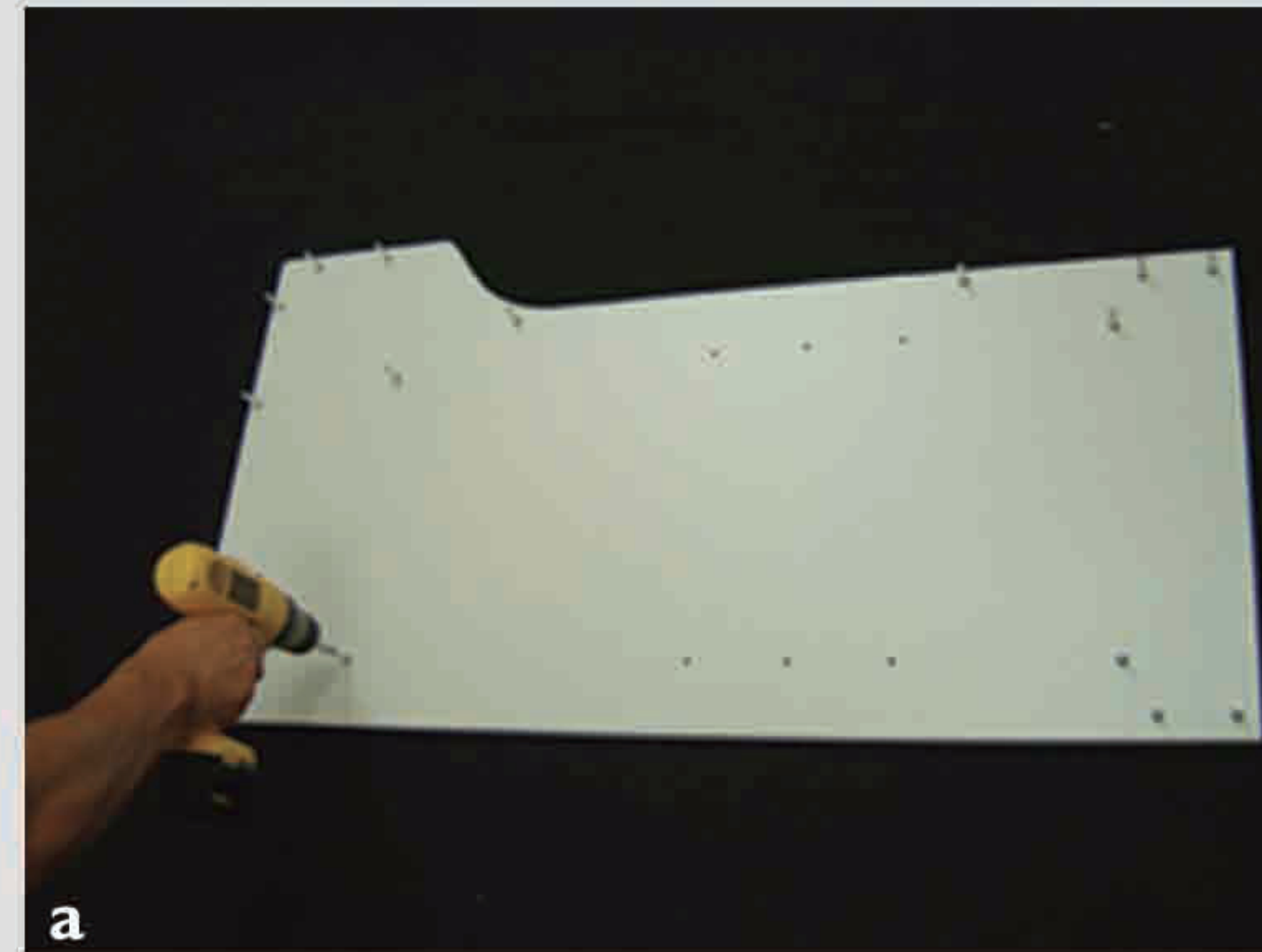


5.

## RIGHT SIDE PANEL ASSEMBLE

RIGHT SIDE PANEL (x1)  
BOLT (x14)

1. Attach right side panel using bolts.
2. Tighten #10 cam locks.

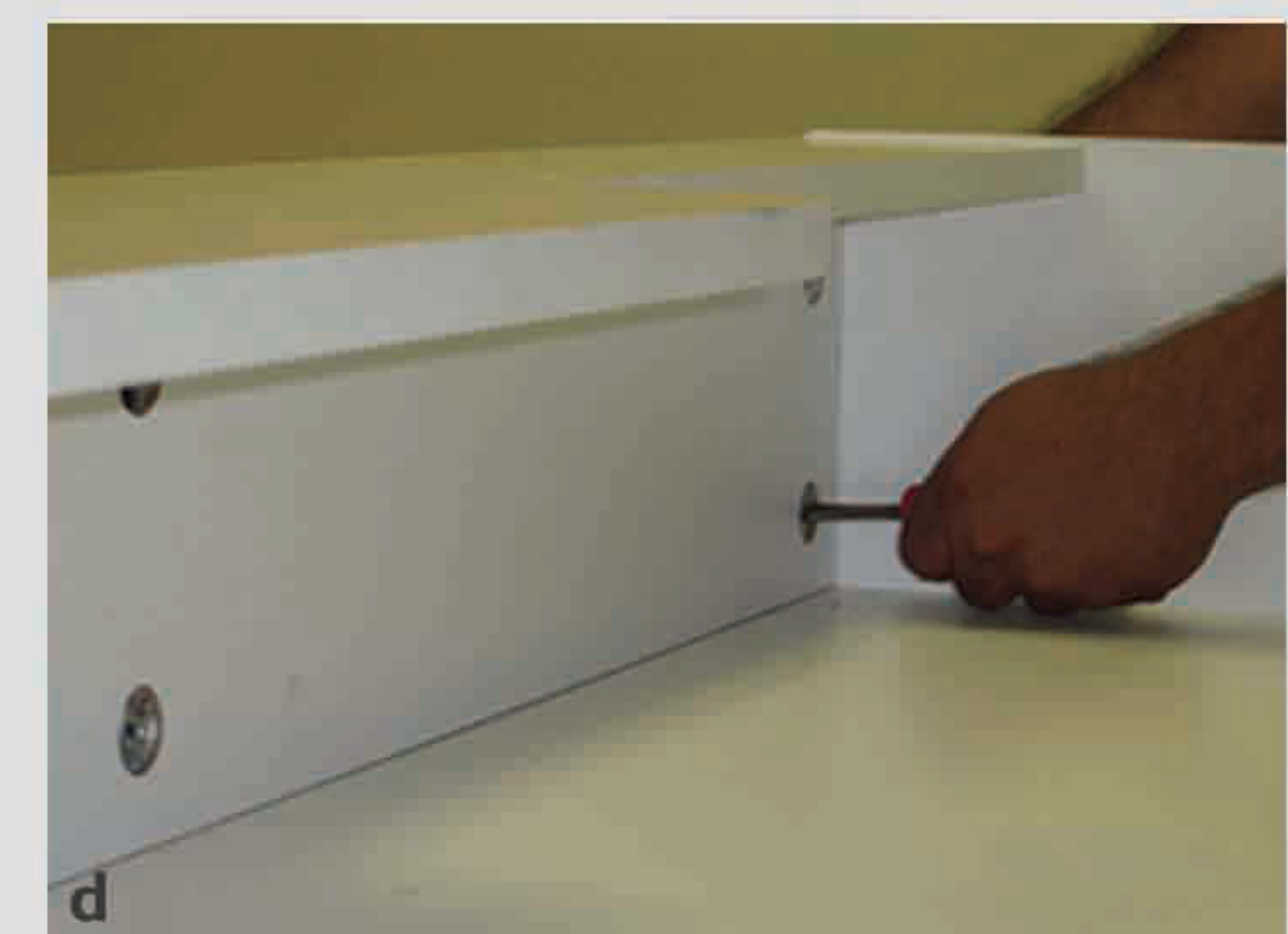
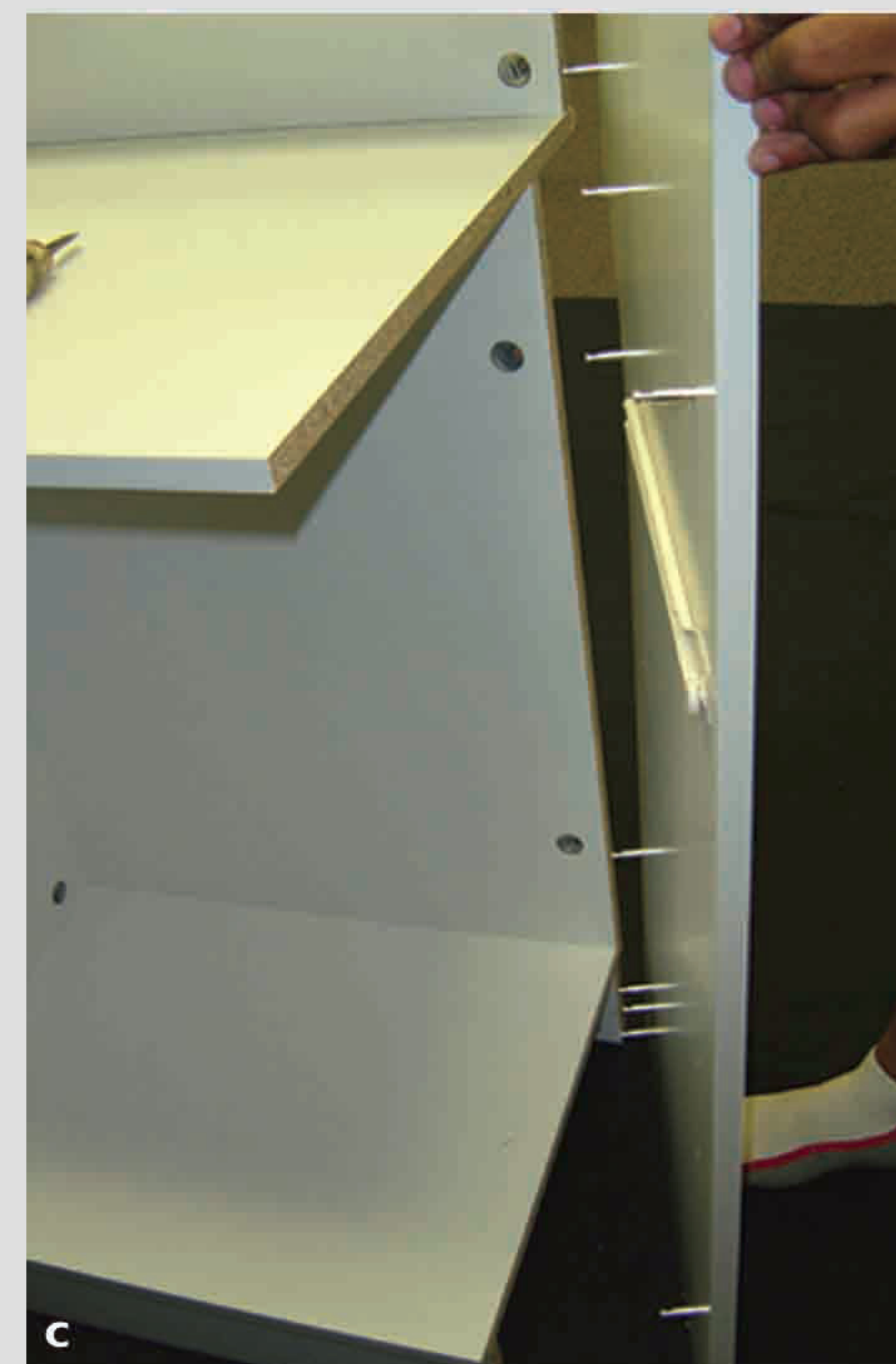
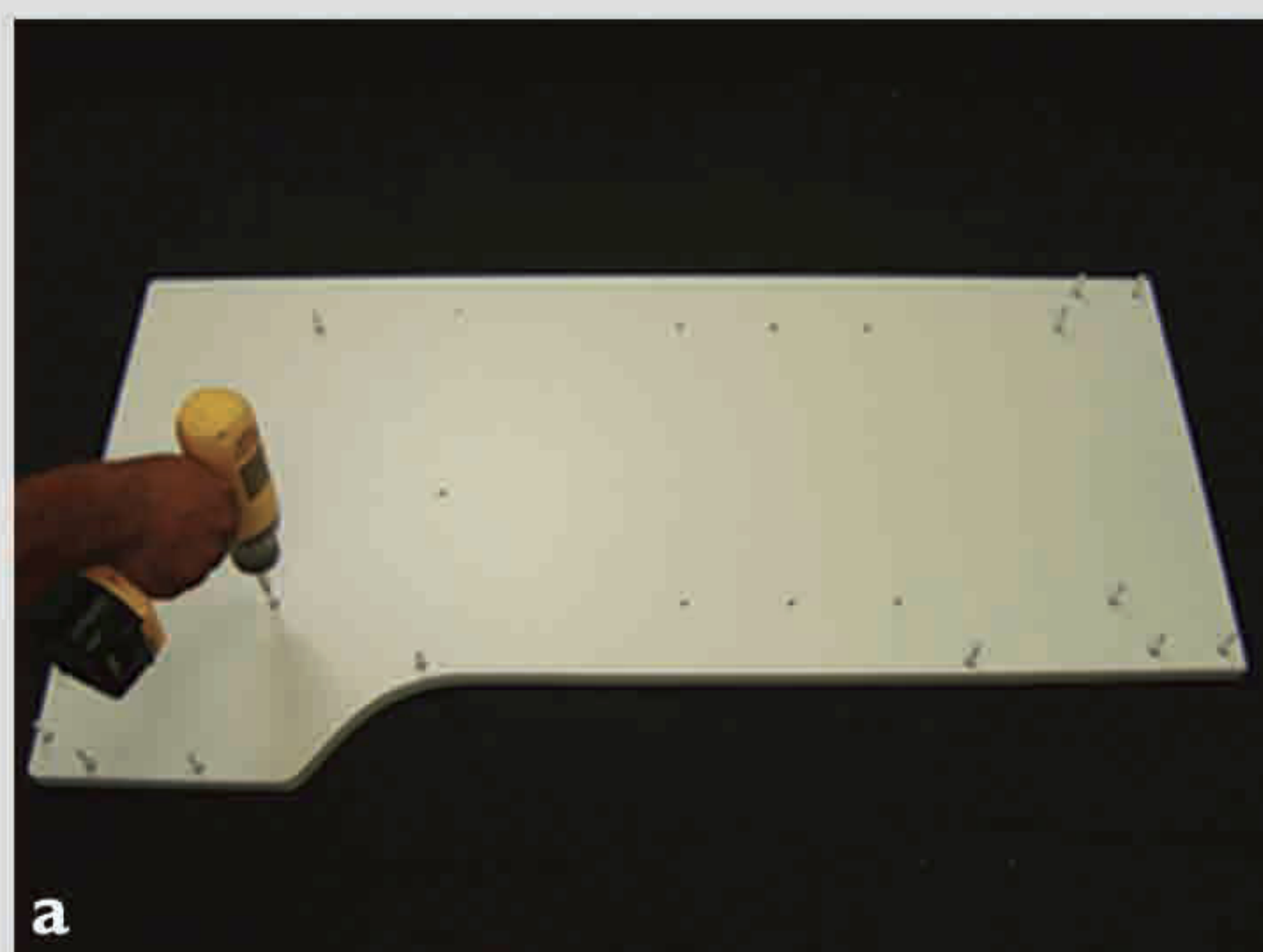


6.

## LEFT SIDE PANEL ASSEMBLE

LEFT SIDE PANEL (x1)  
BOLT (x14)  
LEFT COUNTER SLIDER (x1)  
#6x12 PHILLIPS SCREWS (x2)

1. Attach slider to the left panel with #6x12 phillips screws.
2. Attach left panel to counter; tighten.



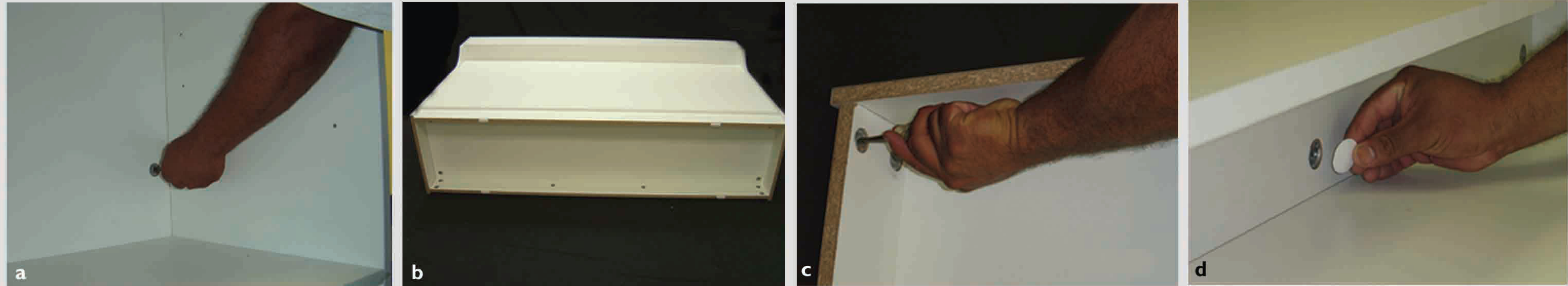


7.

## SECURE ALL CAM LOCKS & INSTALL COVER CAPS

#10 SCREW CAPS (x28)

1. Tighten all #10 cam locks and screws.
2. Install #10 screw caps.

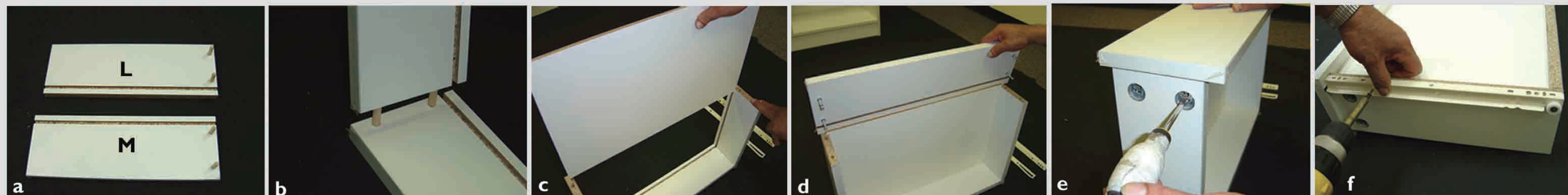


8.

## DRAWER ASSEMBLE

DRAWER FRONT (x1)	DRAWER SLIDERS (1 PAIR)
DRAWER RIGHT (x1)	#10 CAM LOCKS (x4)
DRAWER LEFT (x1)	DOWEL PINS (x4)
DRAWER BOTTOM (x1)	#6x12 PHILLIPS SCREWS (x4)
DRAWER BACK (x1)	#10 SCREW CAPS (x4)

1. Insert dowel pins into place.
2. Connect drawer left, drawer right, and drawer back pieces.
3. Slide in drawer bottom.
4. Attach drawer front to drawer using bolts; tighten #10 cam locks.
5. Attach drawer sliders to drawer using #6x12 phillips screws.
6. Install #10 screw caps.





9.

## INSTALL DRAWER & SHELVES

SHELF SUPPORT PINS (x8)

1. Insert shelf support pins in place.
2. Slide drawer and shelf into place.

